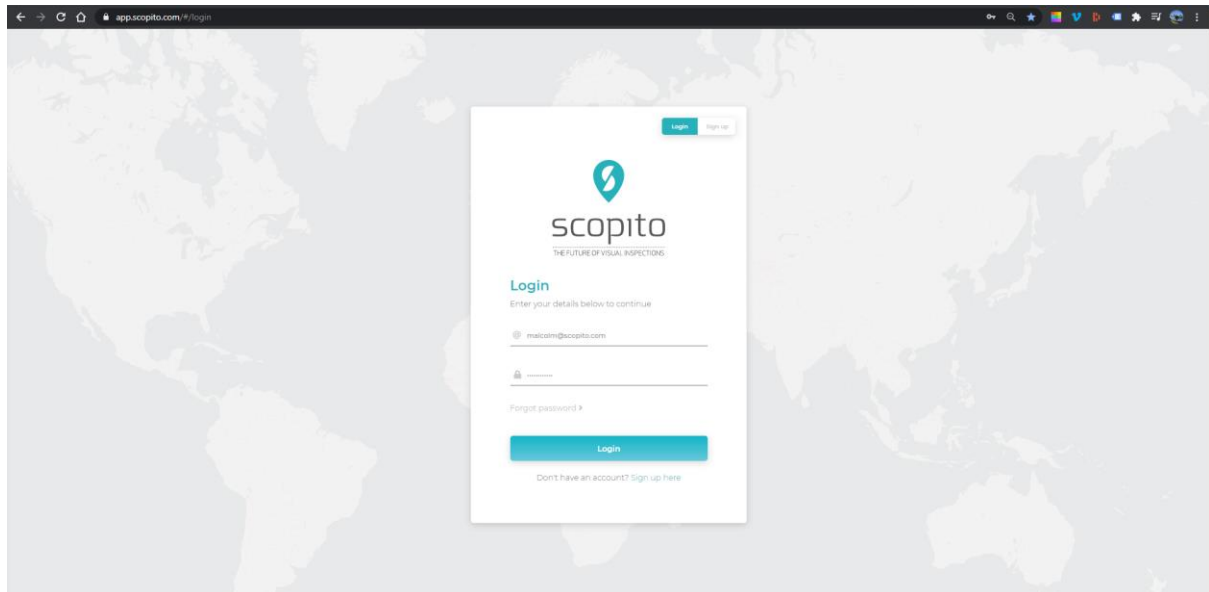


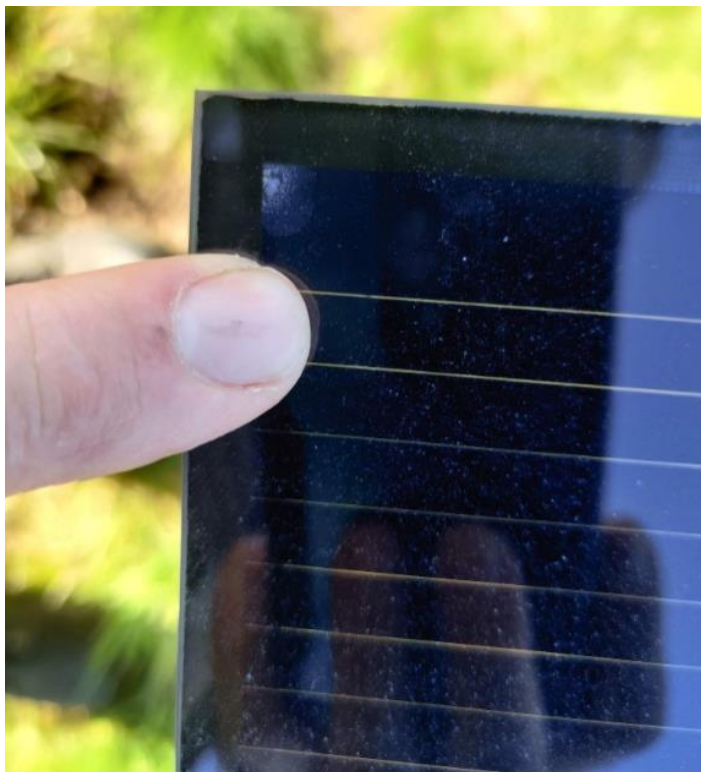
Login to the inspection that was sent to you with username and password, eg

yourname@fwa.com

ABCD1234!



Once you have logged in you will see 4 images. 2 images are close shots of the type of faults we are looking for:

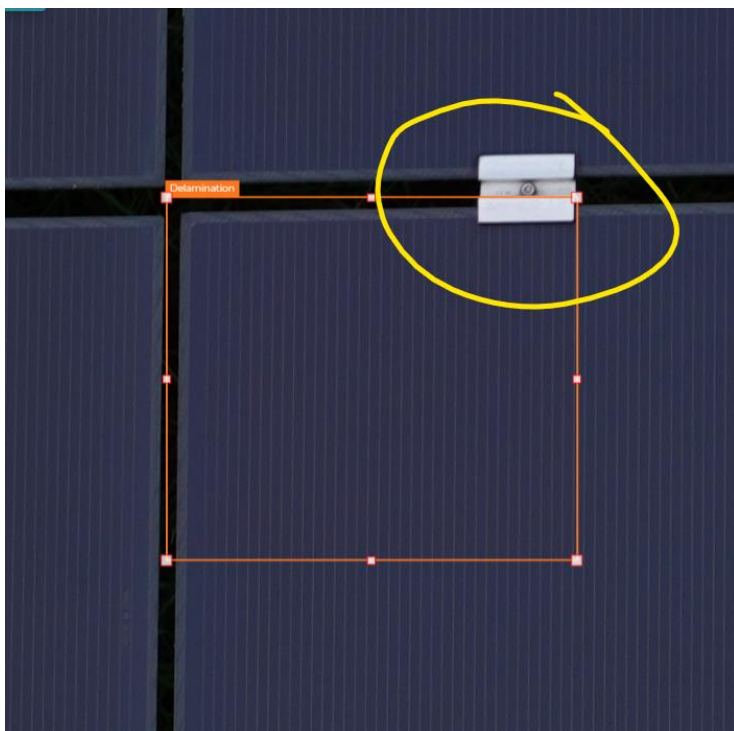


You can see that it is a white mark that always starts in the corner. This is because water is getting inside the solar panel at the corners. It can be very very small – we need to find everything. If you can't see it very clearly but you think there is something in the corner, then you must annotate it.

Image DSC06844.jpg shows you a completed image with 1 annotation made:



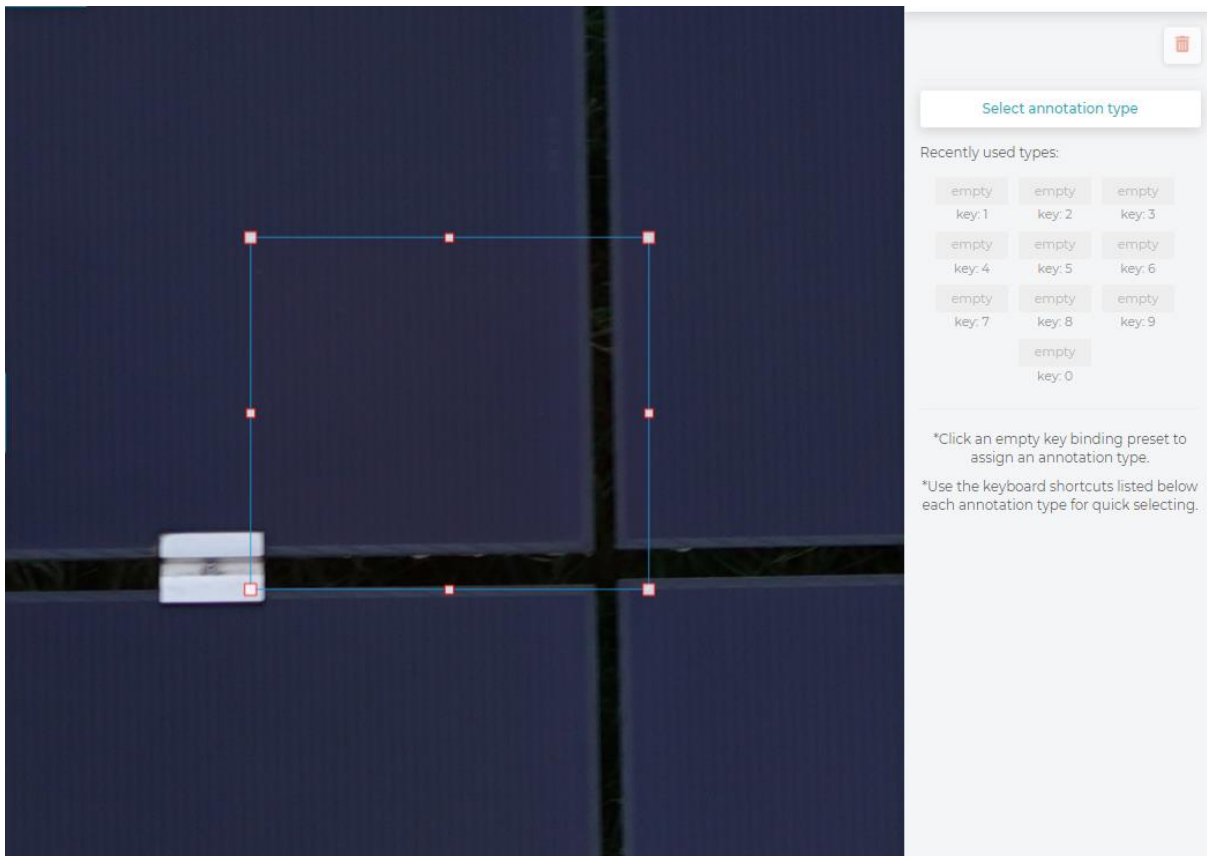
Notice the size of the annotation is square and over the panel clip (circled in yellow):



That is the standard size of the annotation we need, even though the fault is a lot smaller.

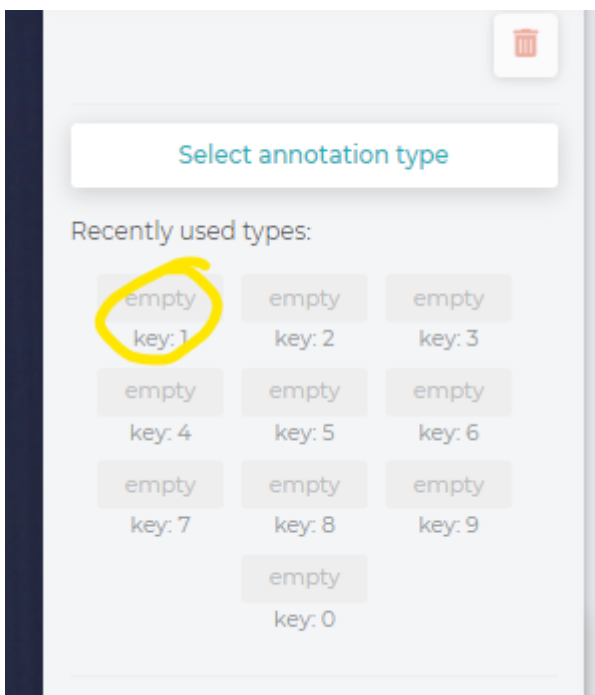
Now check the other image for any faults you can find.

When you find one, make an annotation by pressing 'D' and clicking and dragging the box to size/shape. You can change it and move it afterwards too:

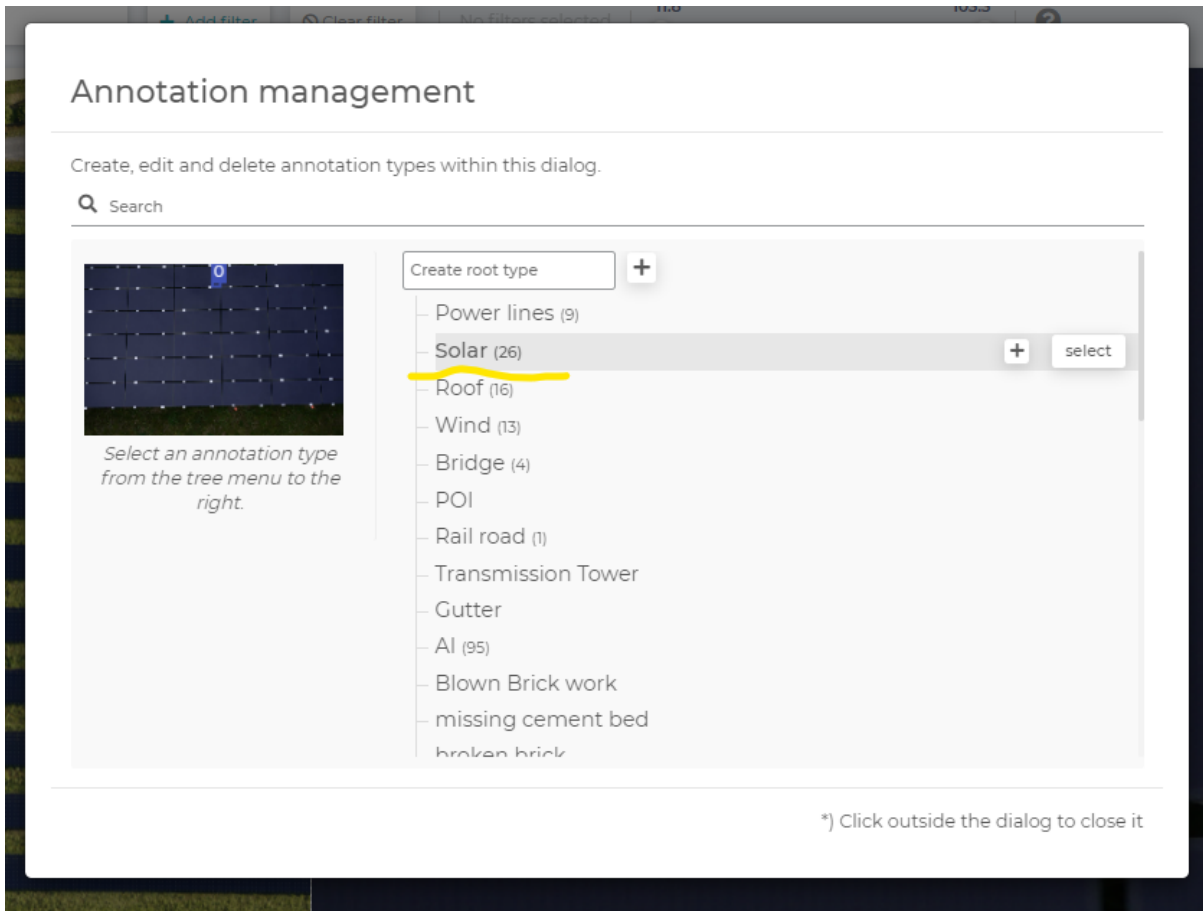


Next you need to select the annotation type.

Click on 'KEY: 1'

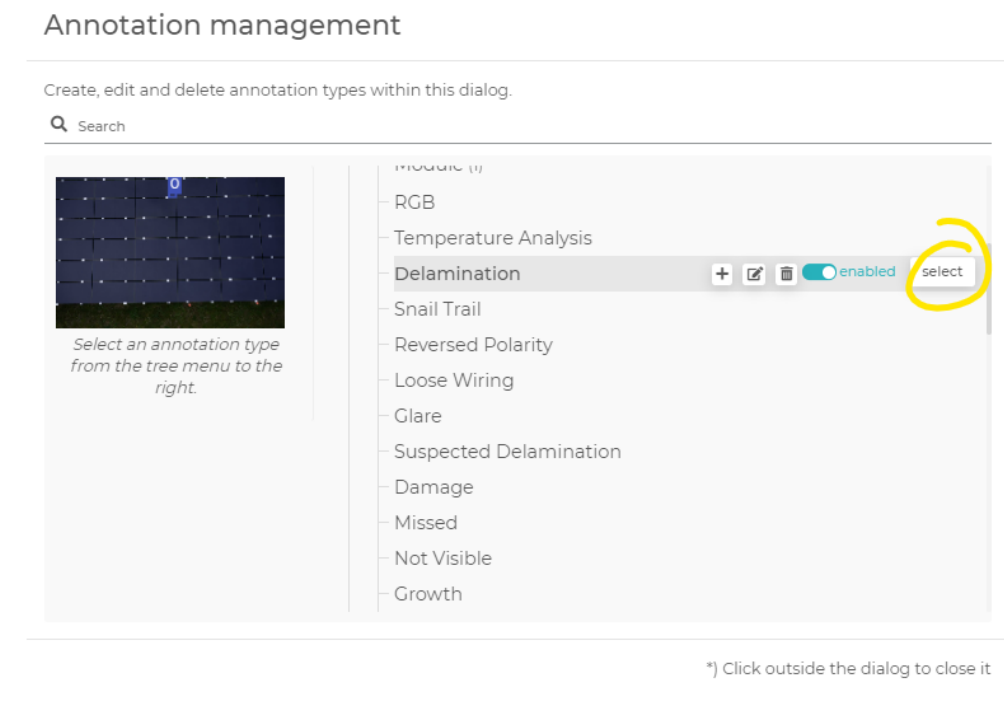


Click on 'Solar' (don't click on the Select button)



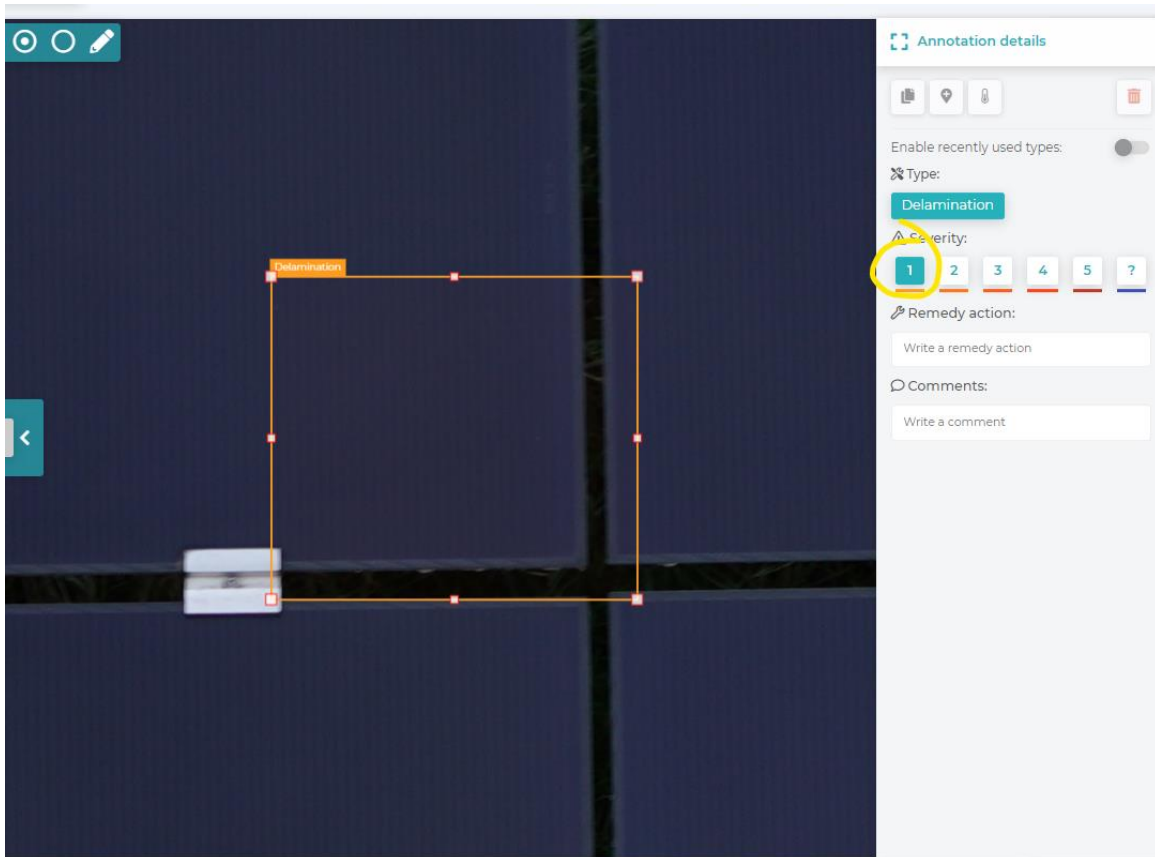
*) Click outside the dialog to close it

Then select Delamination from the next menu:

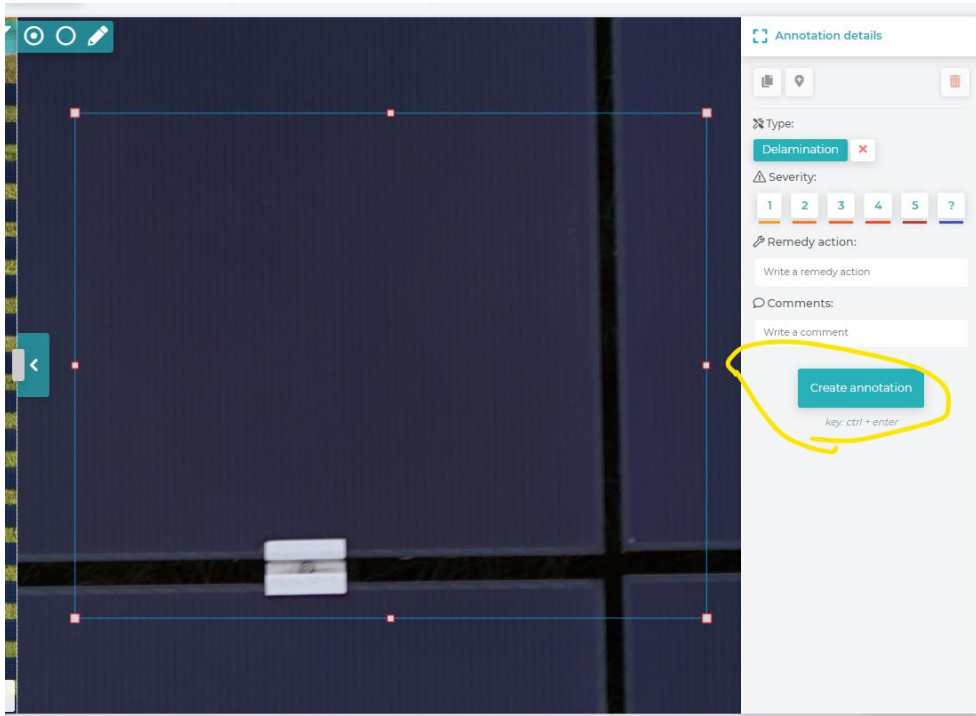


*) Click outside the dialog to close it

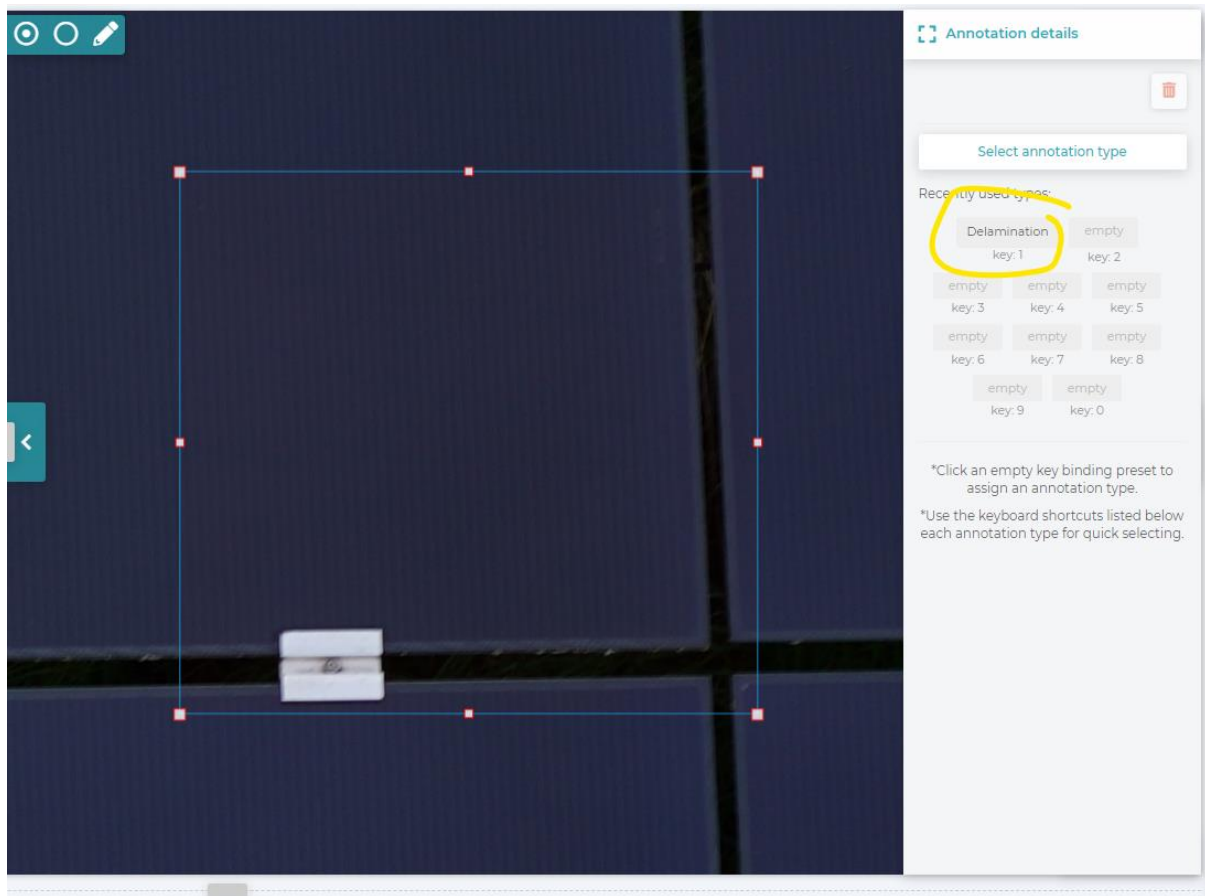
Now set the severity level to 1 by either clicking 1 or using your keyboard 1



Finally complete the annotation by clicking 'create annotation' with the mouse, or using CTRL + ENTER

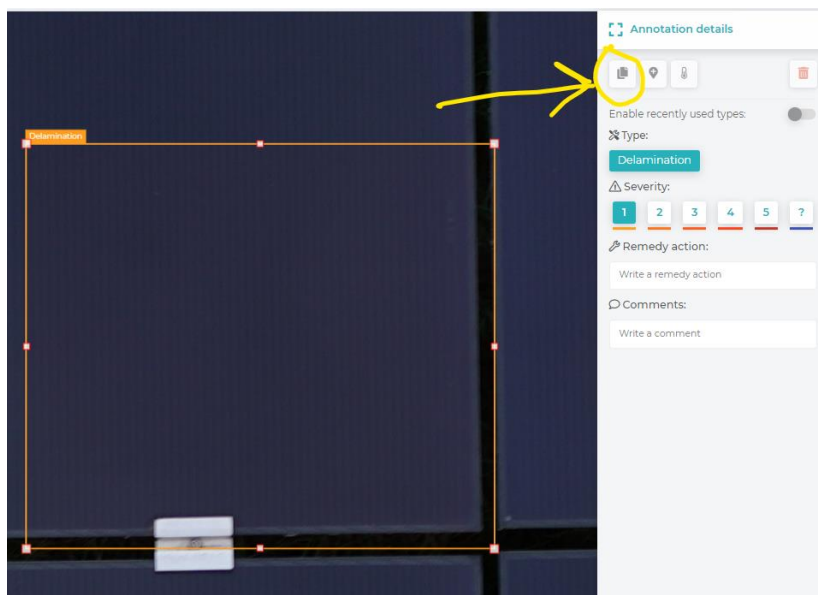


The next time you draw an annotation, you will see 'Delamination' has been saved to key 1:

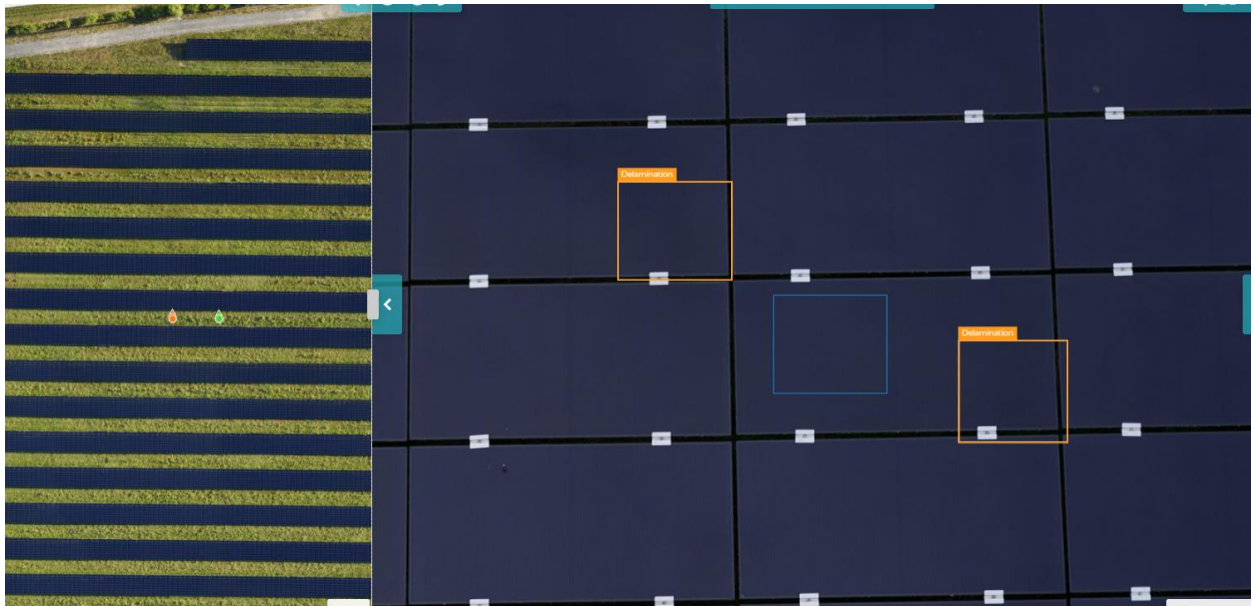


Now you can use the keyboard to make the annotation quicker by pressing 1 then 1 then Ctrl+Enter 1.

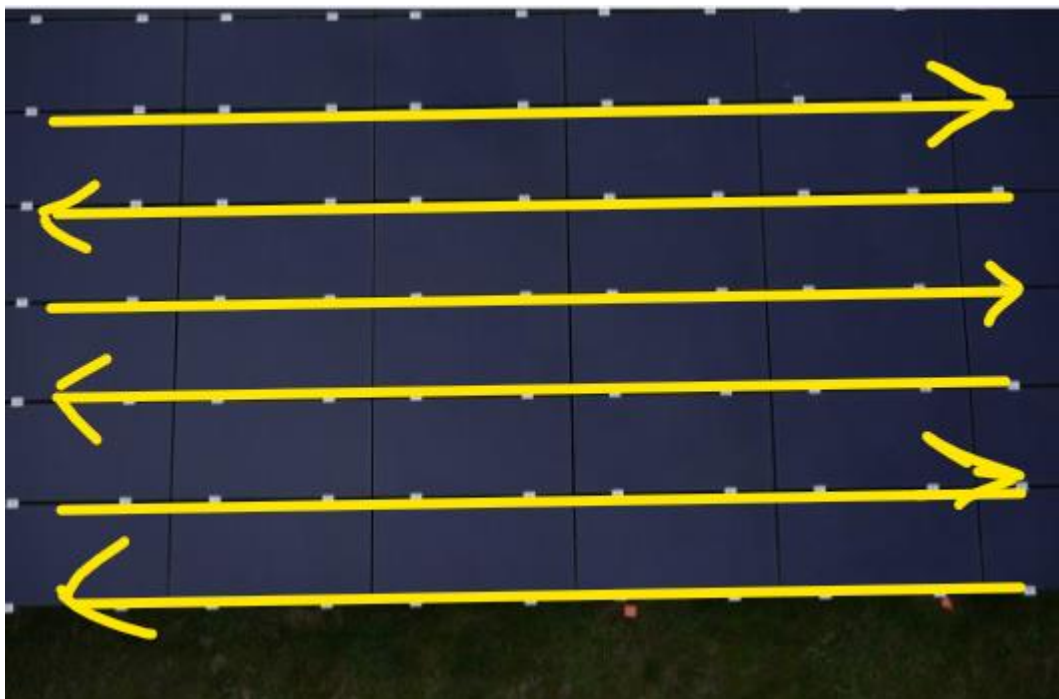
Additionally, if you click on an annotation, you can use CTRL+C or click on the copy button:



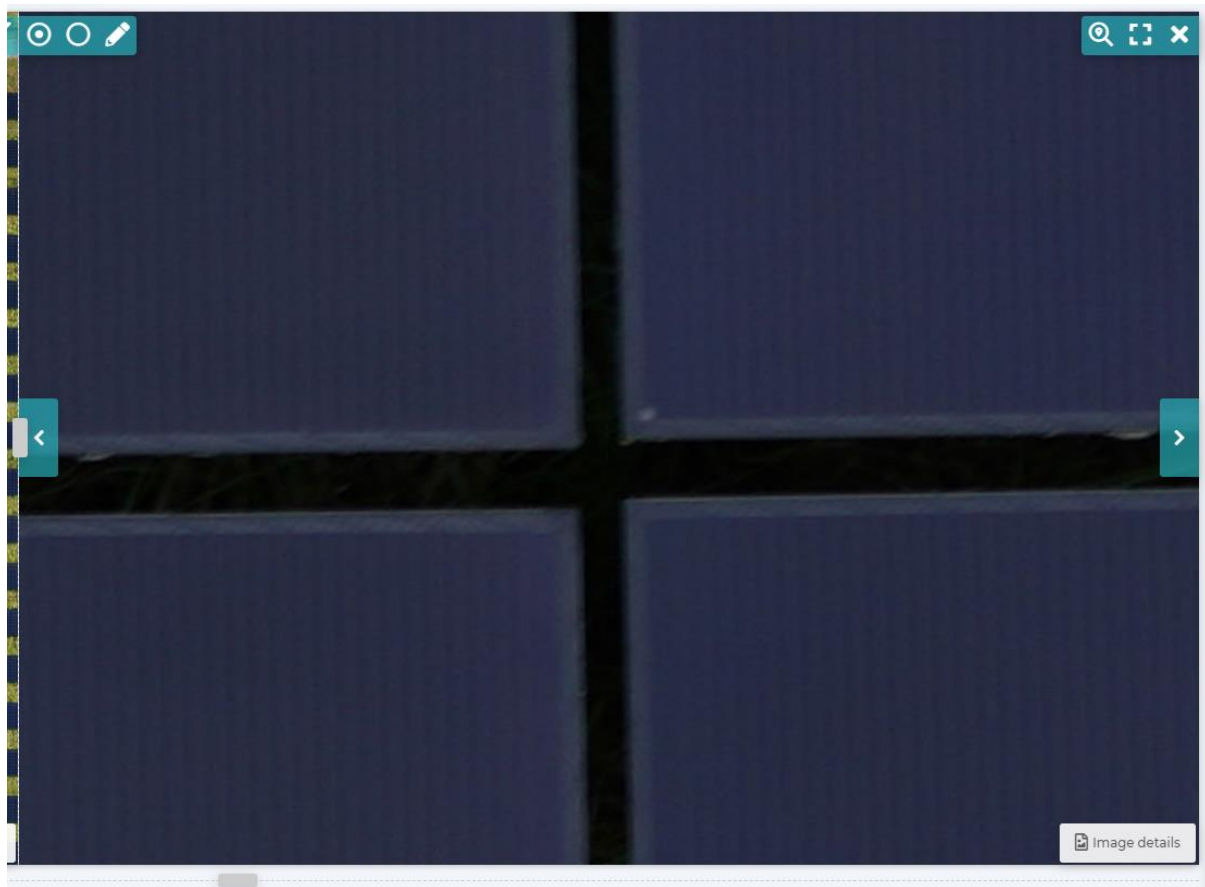
Now you will have an annotation 'saved' on your mouse pointer (the blue one) and you can click the mouse to deploy the annotation where you need to.



Work through the image methodically from side to side:



And zoom into the image very closely to check the 4 corners:



Please let me know if you have any issues or questions. Let me know when you have finished!

Thank you